



1140 Wien | Office | Property no.: 27029

start-up office in business center - all-inclusive rent



Your contact person

Aslan Kurtaran, MBA

Geschäftsführer

+43 1 328 8818-0

+43 699 1178 5193

kurtaran@expatri-consulting.com

www.expatri-consulting.com



start-up office in business center - all-inclusive rent



Location

Auhof Center

Description

The Grothusen Business Center in 1140 Vienna offers its tenants and visitors everything they need for their daily work and much more. In a green area with optimal proximity to the city and perfect infrastructure, the location is one of the most popular in the west of Vienna. The Auhof-Center is located vis-à-vis.

We are currently offering a **19 m²** office space on the ground floor of the Grothusen Business Center plus **43 m²** of ancillary space. The ancillary areas are shared with other tenants on the floor and include a meeting room, ladies' and men's restroom, the lounge zone with waiting area, the reception hall, the foyer, the kitchenette and the kitchen on the 2nd floor with lounge.

In total there are **62 m²** of usable space available, with

- 19 m² - office for exclusive use, and
- 43 m² - adjoining rooms with common use

If desired, we can provide additional storage space for an additional charge. **The operating costs include the costs for the electricity consumption of the office, heating, cooling, as well as the ongoing general operating costs of the building.**

The property is located in Vienna Auhof, at the corner of Albert-Schweitzer-Gasse and Scheringgasse, in the immediate vicinity of the A1 freeway exit Auhof. Overall, the business center is located in a modern and increasingly important commercial area with shopping center, cinema center, gastronomy and much more. Lifestyle and business combine here to form a seductive melange.

Please do not hesitate to contact us for visits and further information.



Graben 7 / 8
1010 Vienna · Austria
www.expatri-consulting.com

tel +43 1 328 8818-0
fax +43 1 328 8818-60
office@expatri-consulting.com

Mr. Kurtaran
National - Tel: 06991 178 5193
International - Tel: +43 6991 178 5193
E-Mail: kurtaran@expatri-consulting.com



Key data

Usable area: approx. 62 sqm
Office area: approx. 19 sqm

Floor: ground floor

Type of use: Commercial
For occupation: ab sofort
Heating: central heating

Location assessment: very good
Architecture: new building
Condition: good

Energy Performance Certificate
Valid until: 29.02.2024
Annual thermal energy index: C 80 kWh/m²year
Energy efficiency rating: C 1.17

Amenities

Elevator: freight elevator
Ventilation: air conditioning

Kitchen: fitted kitchen, kitchenette

Price information

Total Rent: €457.31

Commission: 3 months gross rent plus 20% VAT

Rent: €383.00

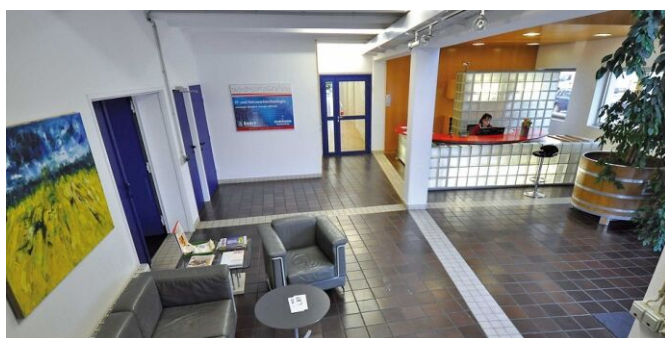
Operating costs: €74.31

Total monthly costs: €457.31

More photos



Begegnungszone



Foyer Business Center

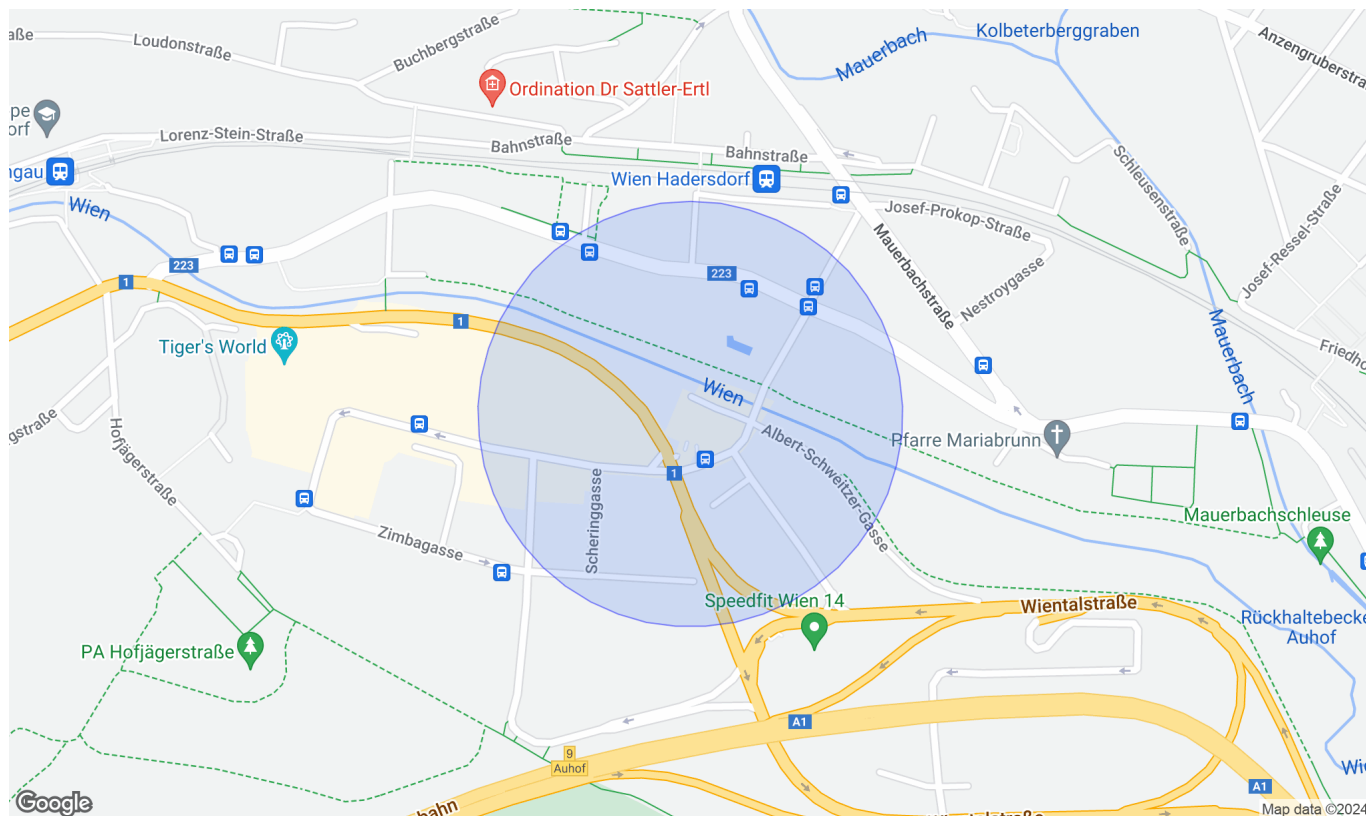


Cafeteria Terrasse



Location

1140 Wien



Infrastructure/distances (POIs)

Health

Physician	2,000 m
Pharmacy	500 m
Clinic	5,500 m
Medical building	3,500 m

Local supply

Supermarket	500 m
Bakery	500 m
Shopping centre	500 m

Transport

Bus	500 m
Tram	3,000 m
Subway	3,000 m
Train station	500 m
Motorway junction	500 m

Children & schools

School	500 m
Kindergarten	500 m
University	2,000 m
Secondary school	7,500 m

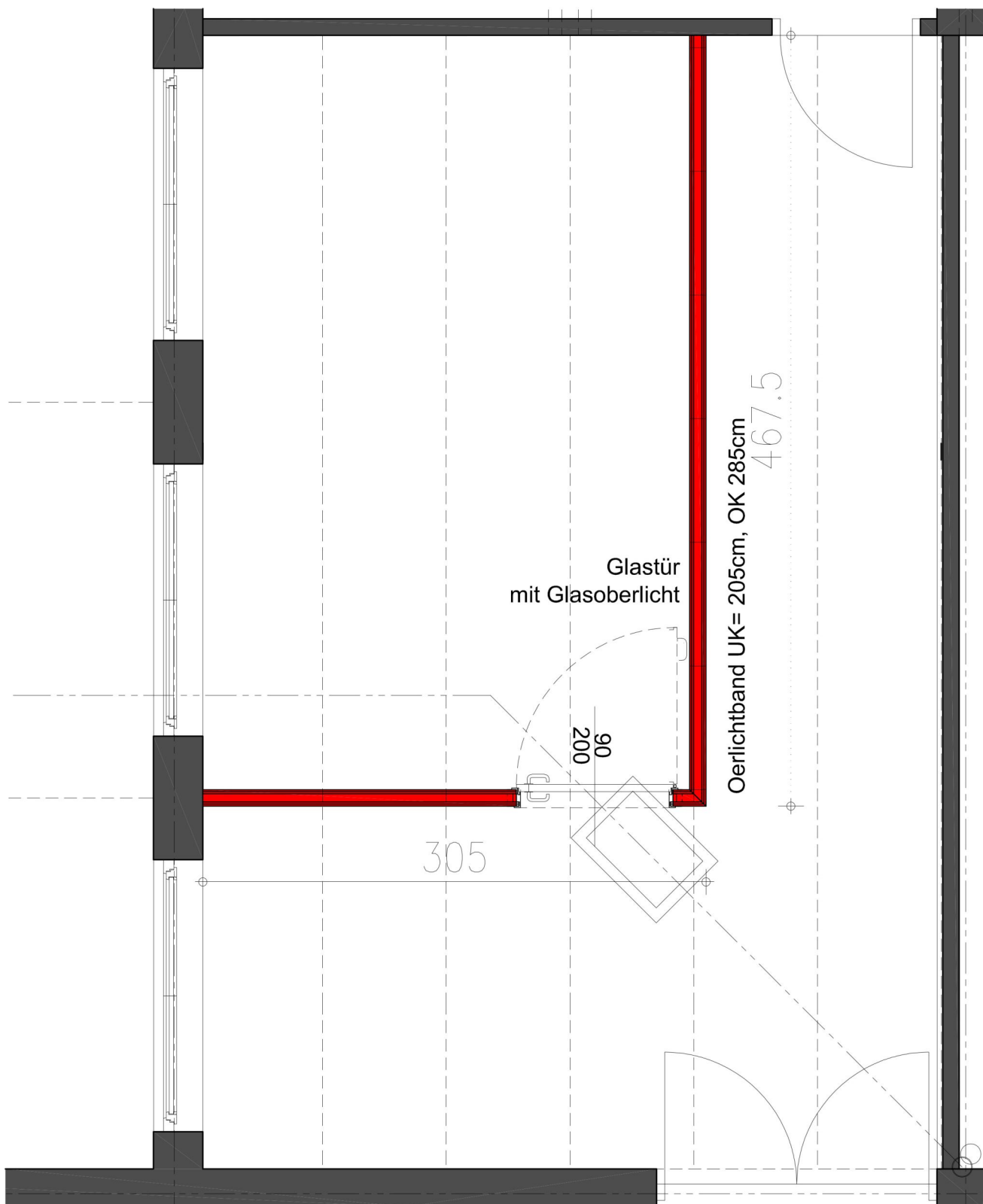
Others

ATM	500 m
Bank	500 m
Post office	500 m
Police	500 m

Stated distance as the crow flies / source: OpenStreetMap



Plan





Graben 7 / 8
1010 Vienna · Austria
www.expat-consulting.com

tel +43 1 328 8818-0
fax +43 1 328 8818-60
office@expat-consulting.com

The above details are based on information and documents by the owner. For the sake of clarity, we would like to retain, by renting or purchasing of one by us nameable properties, the following commissions accrue: renting: 2 gross monthly rent plus 20% VAT. or when purchasing: 3% plus 20% VAT commission fee. (according to fee ordinance for realtors, BGBl. 262 and 297/1996) We indicate that we might have a close economic relationship to the owner. Terms and conditions apply. Errors excepted.